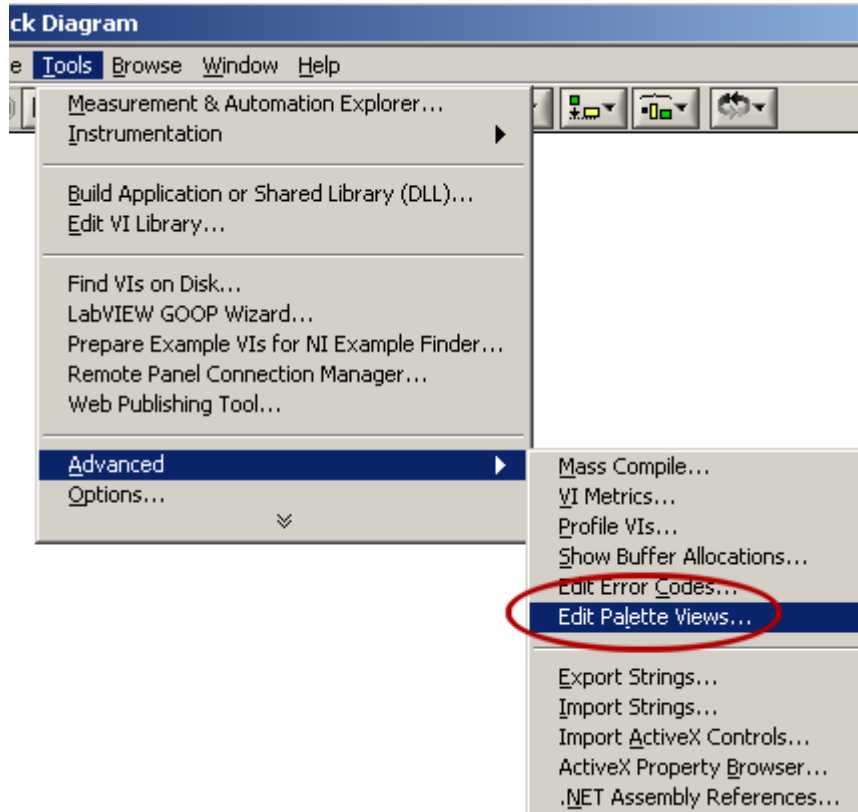


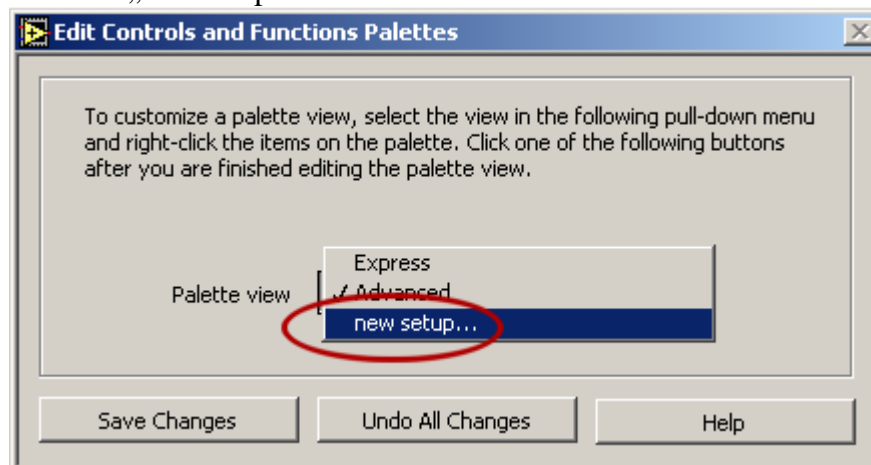
# Installing the Lab2-Package in LabView 7.1

Labview 7.1

1. Select Tools->Advanced->Edit Palette Views...



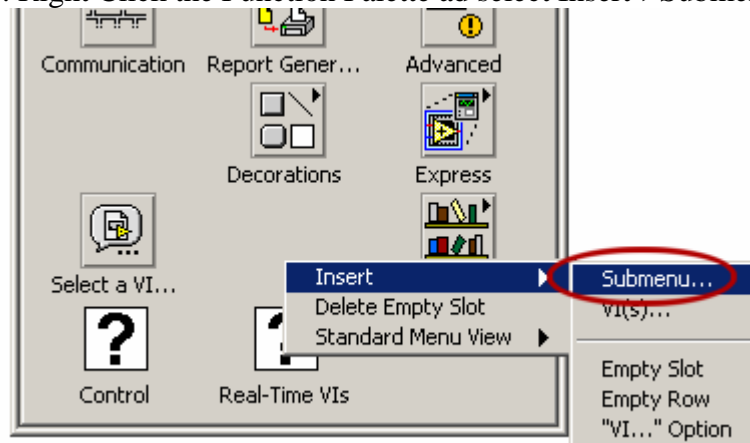
2. Select „new setup“ in Palette View:



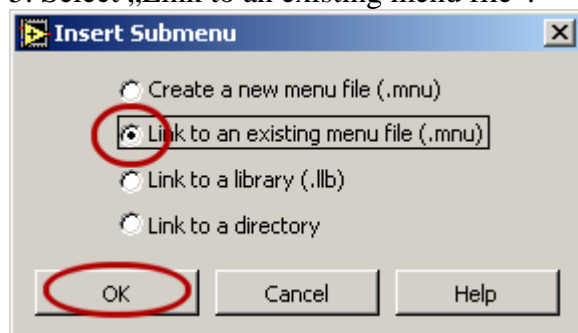
3. Give New Palette View a Name:



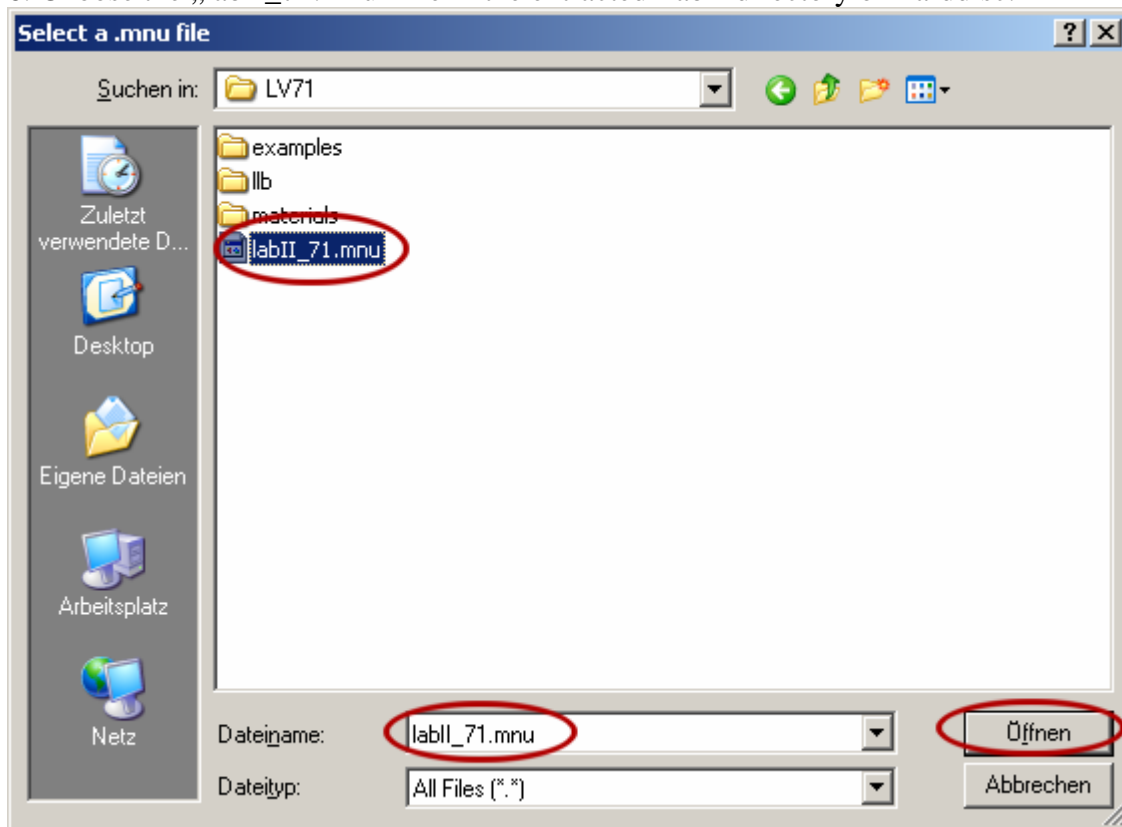
4. Right Click the Function Palette and select Insert->Submenu...



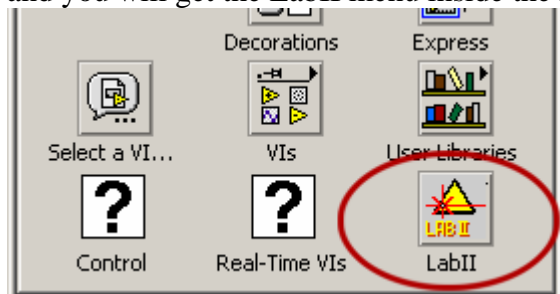
5. Select „Link to an existing menu file“:



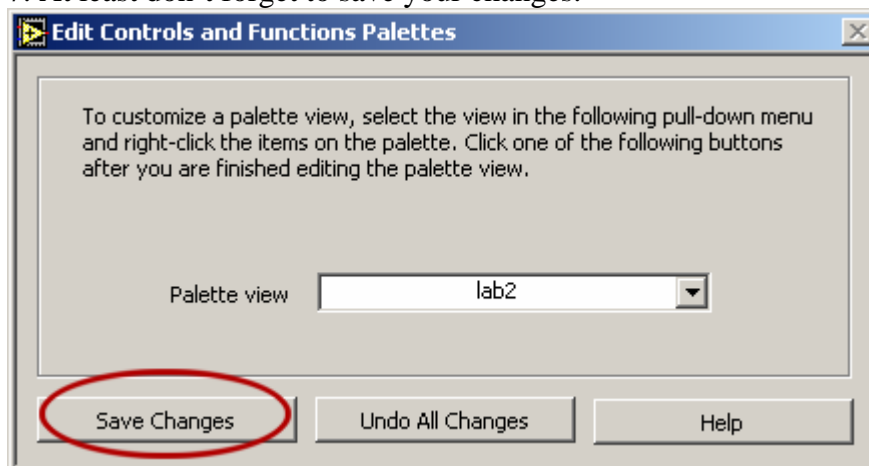
6. Choose the „labII\_71.mnu“ file in the extracted LabII directory on harddisc:



and you will get the LabII menu inside the Labview Function Palette.



7. At least don't forget to save your changes.



Have Fun!